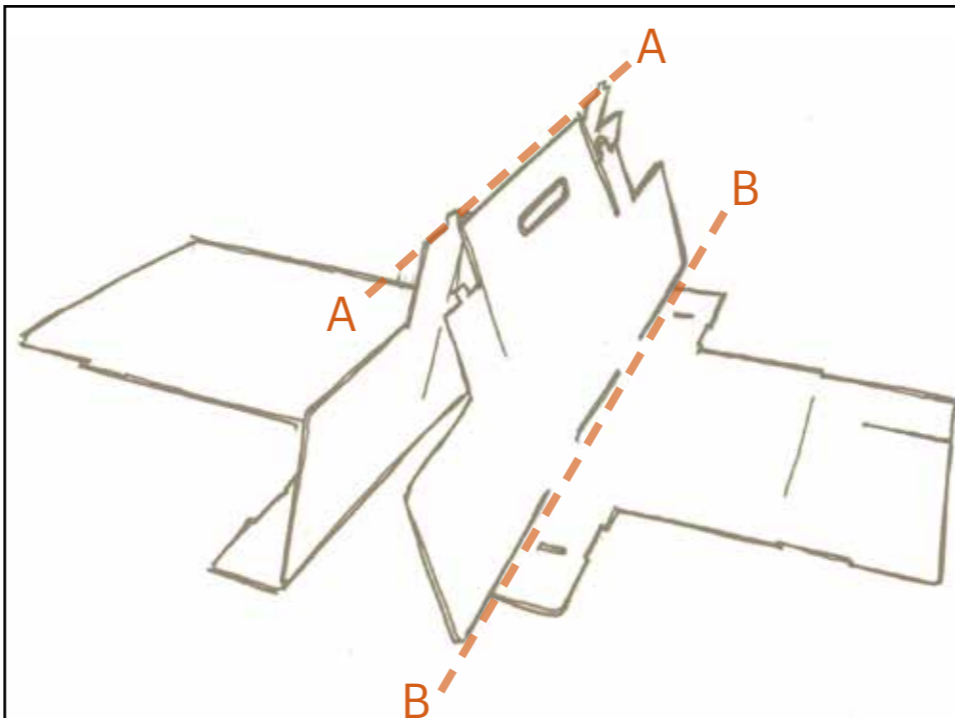
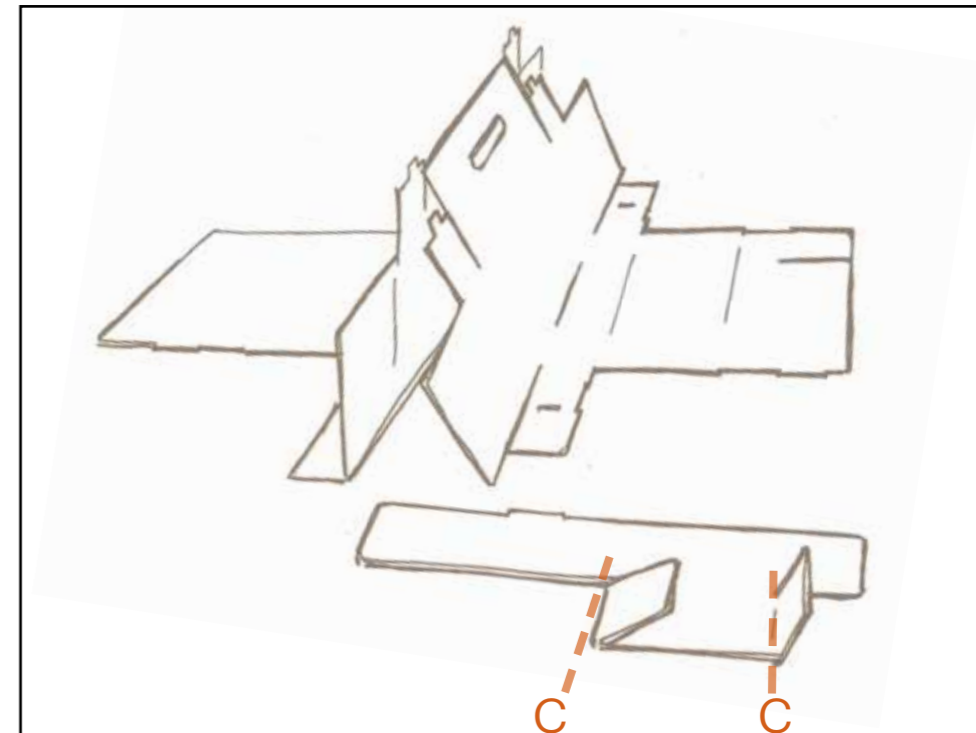


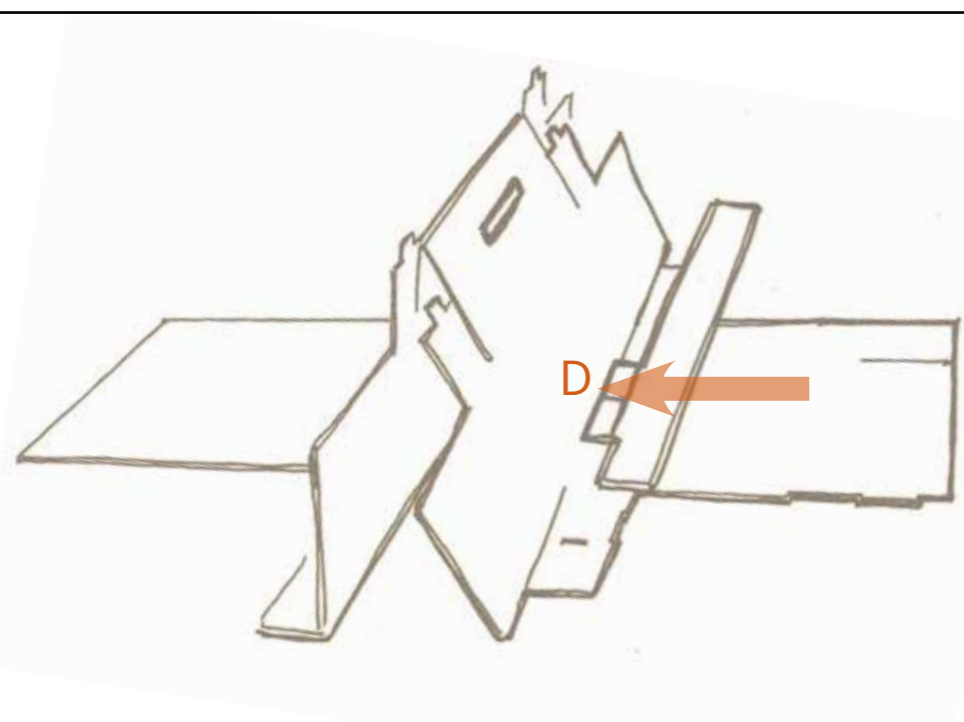
Lay OfficeBox and connecting tab flat on a surface with the printed side facing down and with the plain white surface facing upwards.



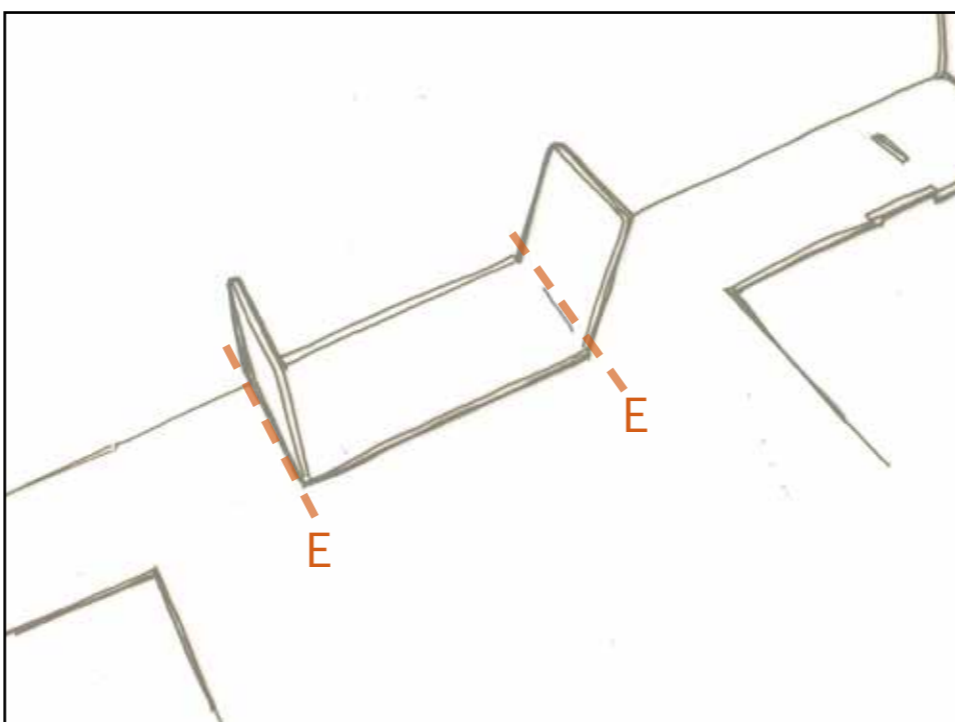
Fold along the centre double perforated line A and B.



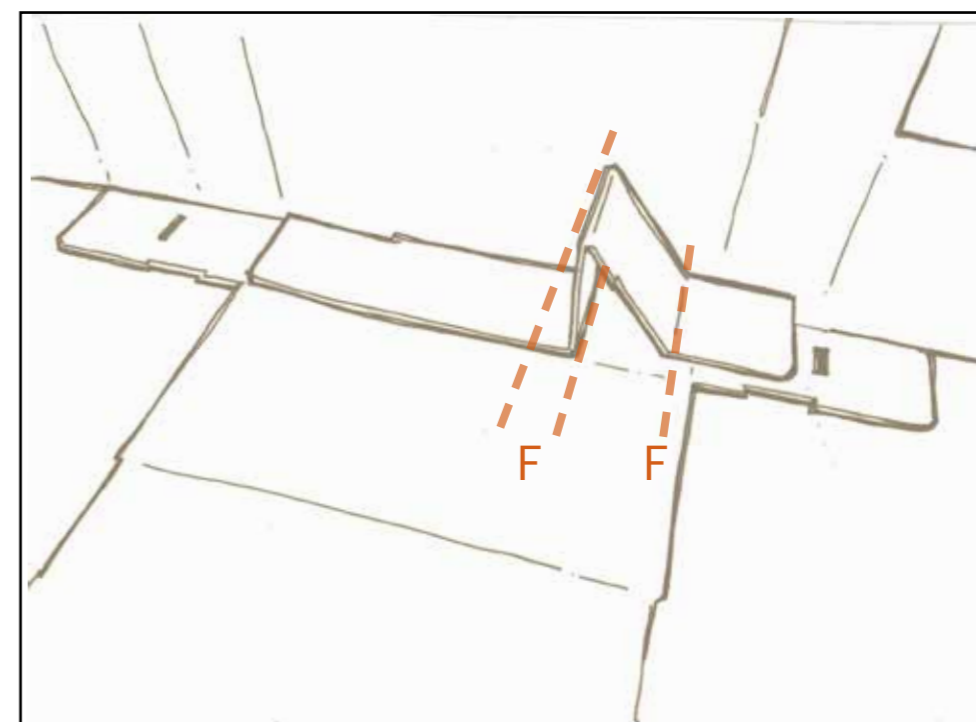
Fold the two short wings over on the connecting tab along line C.



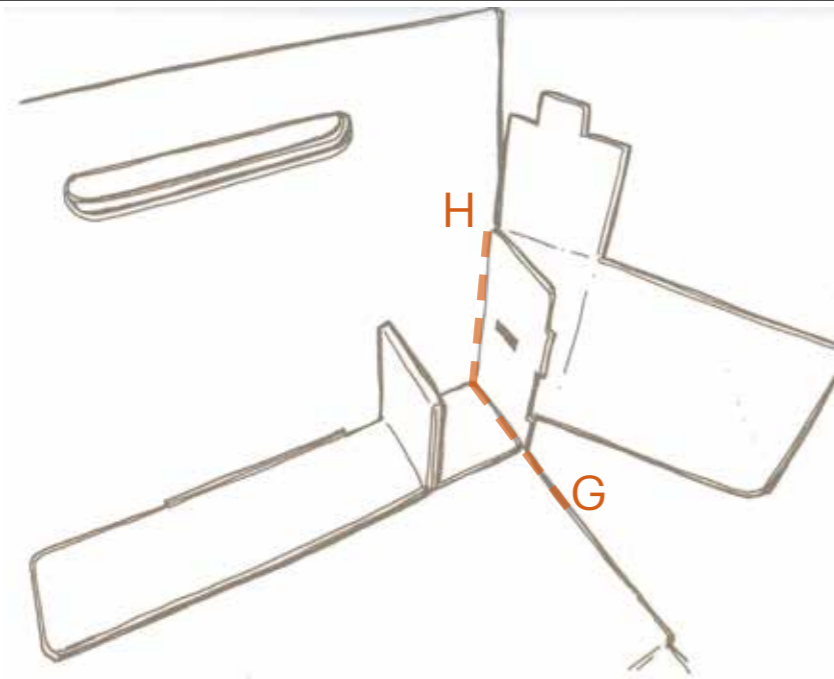
Insert the connecting tab through slot D in the body of the office box to connect both sides.



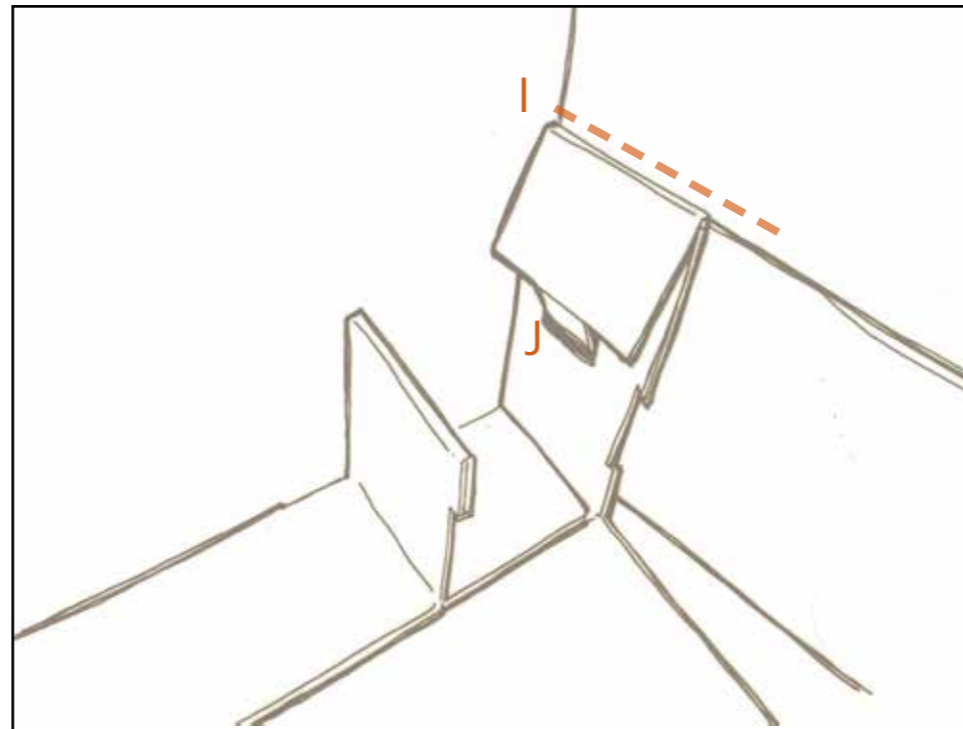
Once the connecting tab has been passed through the slot, unfold the short wings along line E to secure both sides.



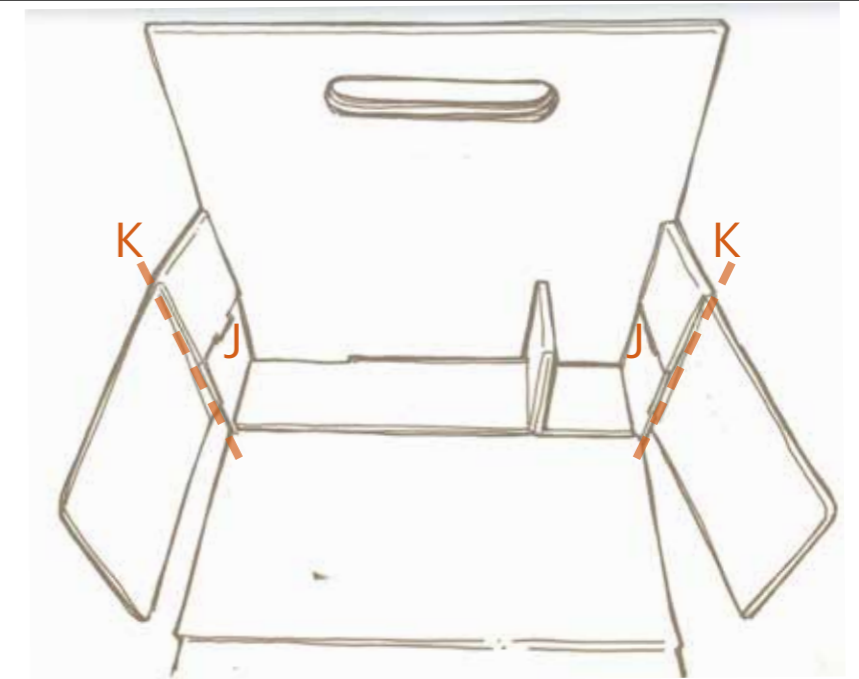
Fold along line F on the connecting tab to create the box division.



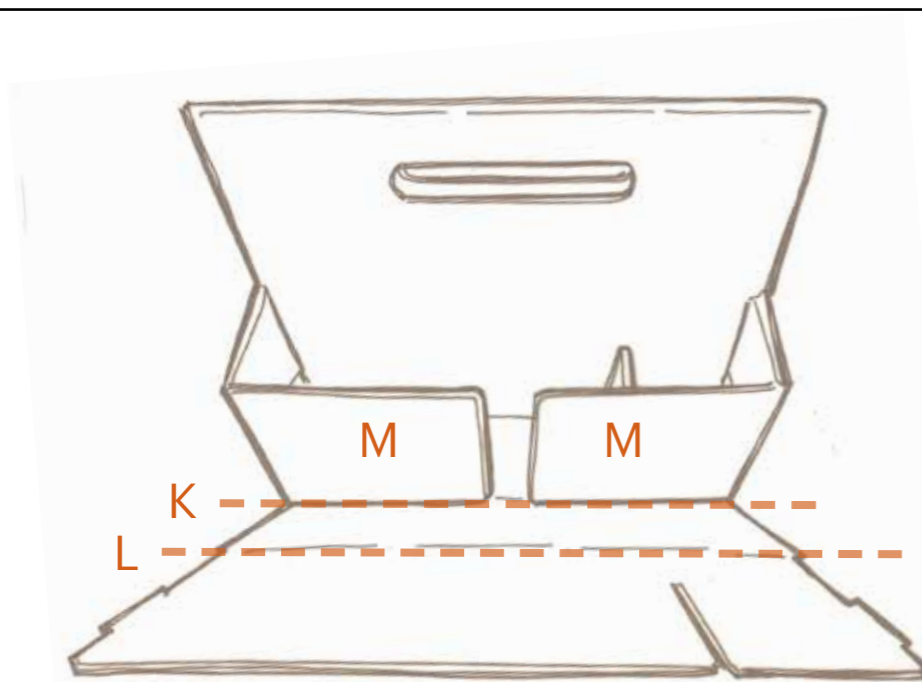
Fold the OfficeBox base up along line G and fold side in along line H



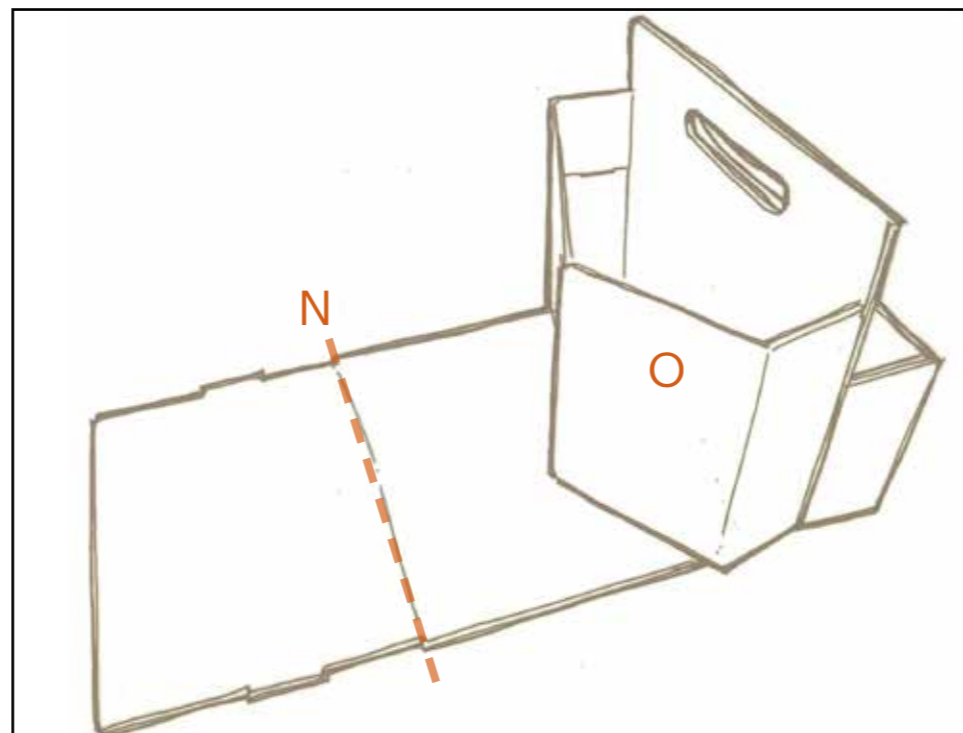
Fold along line I and insert tab J into the slot to secure sides and repeat on matching side.



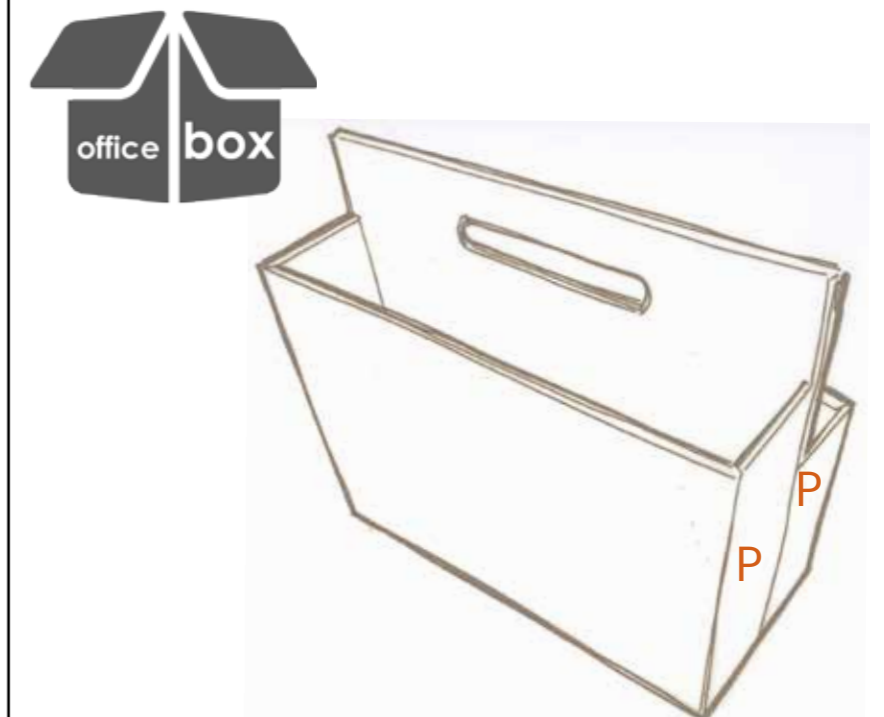
When tab J has been inserted on both slots, fold the sides in along line K.



Fold front up along line K, fold front panel over panels M and push front panel down to the base. This side of the officebox is complete.



Repeat previous 3 stages on second side of Officebox. Fold back panel over panel O and push back panel down to the base.



Once the OfficeBox has been assembled, push in on side P to secure all the tabs in the slots.